

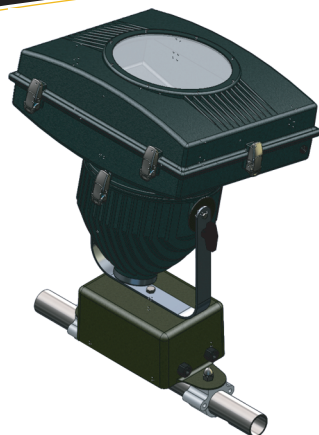
# OMNICOLOR™ CMH400 PAR

40,000 Lumens

Outdoor / Architectural

40,000 Lumens

Color - Changing PAR

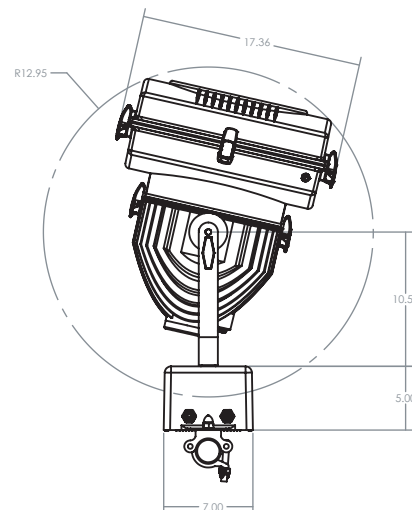
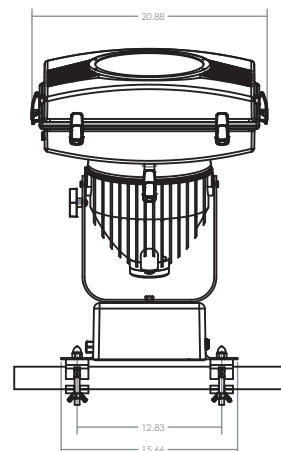


The Syncrolite OmniColor CMH400 PAR is an outdoor/architectural color-changing PAR lamp featuring long-life, 40,000 lumen 400W Ceramic Metal Halide lamp with 90+ CRI. Unit includes the OmniColor color-changing system with DichroTech™ dichroic color and VFL holographic microlens light-shaping diffusers for control of light distribution and near maintenance-free operation. Dimming is accomplished via a linear mirror film mechanical douser. Unit is rated IP67 for operation in the most demanding environments. Low maintenance design combined with long-life, ultra high efficiency CMH lamp means low cost of operation and significant energy savings.

## Specifications

- Lamp – GE CMH-400-GX9.5 Ceramic Metal Halide, 40,000 Lumens at 3200°K or 4100°K and 90+CRI
- Life - 10,000 hours
- Reflector – 10" Dichroic cold mirror glass reflector
- Connectors – Fischer 3-pin and 5-pin IP68
- Ballast – Warner Power SafeArc 150-400W
- Color Module – OmniColor1 color system featuring 7-frame DichroTech™ dichroic additive color mixing plus linear mirror film dimming; Optional OmniColor2 additive/subtractive DichroTech™ dichroic color mixing without dimming or OmniColor-B biaxial DichroTech™ dichroic color mixing without dimming
- Lens – User-selectable VFL holographic microlens light-shaping diffuser with a wide variety of available uniform and anamorphic beam distribution angles
- Signal Input/ Feedback – Syncrolite CM-1 power/signal distribution module allowing remote monitoring, addressing and function control
- Construction – Gasketed and o-ring sealed cast aluminum with powder coat, IP67

Power requirement – 2.5A at 180-265VAC, 5A at 90-132VAC



MEMBER



www.syncrolite.com

2025 Royal Lane, Suite 370

Dallas, TX 75229

214.350.7696 tel

214.350.8051 fax



**SYNCROLITE™**  
ENTERTAINMENT TECHNOLOGY

UL / ETL / CE Listed

Listing ref. # 3031978 - 001

